



BOARDING AT ASHFORD SCHOOL



ASHFORD SCHOOL
Inspiring Minds

2026 • SINCE 1898

LETTER *from* THE HEADMASTER



For over 125 years, Ashford School has stood at the centre of educational excellence, pairing outstanding academic attainment with principles of character and community. Situated in the heart of Kent, our boarding provision is sought after amongst international students for providing a very British way to live and learn, whilst also celebrating diversity and multi-culturalism. In much the same way, we also enjoy the best rural elements of the Garden of England, whilst remaining central to commuter towns and to London.

Abundant in opportunities and challenges, a childhood supported by our leading boarding experience will broaden horizons, and inspire minds. We hope you'll join us on that journey soon.

ASHLEY CURRIE
MPhys, MEd, DipLCM

A handwritten signature in black ink, appearing to read 'Ashley Currie', written over a white background.

Headmaster



To find out more about life as a boarder at Ashford School, watch our latest video using the QR code displayed, head to www.ashfordschool.co.uk/boarding or contact us directly.

WEBSITE: WWW.ASHFORDSCHOOL.CO.UK

EMAIL: ADMISSIONS@ASHFORDSCHOOL.CO.UK

TELEPHONE: +44 (01)1233 625171

ADDRESS: ASHFORD SCHOOL, EAST HILL, ASHFORD, KENT, TN24 8PB

INSTAGRAM: @ASHFORDSCHOOL

YOUTUBE: @ASHFORDSCHOOLKENT







ASHFORD SCHOOL

Inspiring Minds

Are courteous, p...
encouraging at all
Welcome the idea
perspectives of ot
Hold our own vie
scrutiny and are p
to modify our opi

RESILIENCE

This means we...

- Rise to new chall and take risks w
- Respond constru and embrace fai to success
- Strike a balanc aspiration and

WELL



WELCOME TO *Ashford* SCHOOL

ABOUT ASHFORD SENIOR SCHOOL

Ashford School in Kent is a leading co-educational independent School that is home to just over 1000 pupils, 400 of whom are at the Senior School. Taking both day pupils and boarders, the School was founded over 125 years ago in 1898 and has proudly upheld academic standards and community values ever since.

Academic rigour is at our core, as we strive to embody our tagline of Inspiring Minds and deliver outstanding examination results.

Beyond the classroom, co-curricular activities are abundant, and we instill a love for music, drama and the arts. Ashford School is committed to its status as a Steinway School, ensuring that our instruments are of the very best quality.



PROUD TO BE A STEINWAY SCHOOL


Global perspectives are woven through the curriculum, languages and partnerships, encouraging pupils to question thoughtfully, respect difference and engage with issues that matter locally, nationally and internationally.

Scholarships are available in the areas of academic, art, music, drama and sport.

The School benefits from being a member of the United Learning group, which is the fourth largest charity (and the largest educational charity) in the UK.



THE ICONIC ASHFORD SCHOOL BLAZER



**"PUPILS DISPLAY EXCELLENT
MANNERS, HIGHLY DEVELOPED
COMMUNICATION SKILLS AND
COMPASSION THROUGH THEIR
WORDS AND ACTIONS."**

*Independent Schools Inspectorate
Report, 2024*



EXPECTING *Academic* EXCELLENCE

At the core of the academic experience at Ashford School lies a commitment to building positive learning habits so that all pupils can reach their full potential.

A comprehensive curriculum is delivered by passionate and highly qualified subject specialists who work with dedication to ensure that every child leaves Ashford School with a distinguished academic record.

Opportunities for academic enrichment include trips to museums, exhibitions and galleries, as well as debating and

competitions. Wider learning is encouraged in all subjects.

Some of what we offer includes:

- The EPQ (Extended Project Qualification)
- Societies in English Literature, Science, and Senior Drama
- International and national Science and Maths competitions (Olympiads)
- Ceramics and animation classes
- The Medics' Society
- Physics trip to CERN
- Language exchange trips
- Philosophy and Ethics conferences
- Partnership with the Royal Shakespeare Company's Schools' Project
- Musical productions
- Multiple orchestras and choirs

• 36% of A Level grades are A*-A, whilst 68% are A*-B


• 61% of GCSE grades are 9-7

• 70% of students in 2025 went to Russell Group universities

• Ashford School offers A Level, GCSE, IGCSE, BTEC and EPQ



LEAVERS PROGRESS TO LEADING UNIVERSITIES



**"PUPILS OF ALL ABILITIES
ARE ACHIEVING WELL ABOVE
NATIONAL AGE EXPECTED
LEVELS AND BETTER THAN
THAT SUGGESTED BY
BASELINE TESTS."**

*Independent Schools
Inspectorate Report, 2024*

BOARDING *at* ASHFORD SCHOOL

ABOUT OUR BOARDING PROVISION

Boarding allows pupils of different ages and from different backgrounds and cultures to come together to live, work, and enjoy themselves and develop skills for life. They help and support one another, discover their talents in the range of activities on offer, and form lifelong friendships.

- Ashford Senior School is home to a diverse community of over 100 domestic and international boarders, representing 28 different nationalities.
- Boarding is available from Year 7.
- Pupils stay in our on-site boarding houses, divided between Alfred House for male pupils, and Brabourne House for female pupils.
- Boarding houses are fully staffed by resident and non-resident staff. At least one member of staff is always easily available to boarders, day or night.
- Boarding houses are led by Houseparents and Assistant Houseparents.
- The boarders are assisted by dedicated boarding tutors who

regularly set time aside for each pupil.

- The majority of our boarders (87%) are full time residents, ensuring that the boarding houses are always vibrant and busy communities during evenings and weekends.



SUPPORT IS ALWAYS AVAILABLE

- Ashford School boarders do not take exeat weekends, allowing for full time wrap around care for international pupils during term time.
- Boarders are fully integrated into School life with day pupils only returning to boarding houses after School hours, allowing them to circulate in the whole student body throughout their timetable.
- There is no Saturday School for boarders or day pupils, giving time for relaxation, sports fixtures and extra-curricular activities.

NO EXEAT
weekends

ALFRED HOUSEPARENT, ADAM BARTON

"I'm Mr Barton, Houseparent of Alfred House. I became a Houseparent four years ago, and I must say it's the most fun part of my job, I really enjoy it. It's nice to see the boarders outside of School in this home environment. When I joined the School and took on the post, it's something I never looked back from, it's been really exciting to be part of such a warm community.

The role is split into pastoral care, and academic support. We're there for them holistically if they need us, but to also make sure School is going well and support the pupils' academic output. Each boarder has a House Tutor within the boarding house, and their role is to check in on studies and School life.

For pupils, boarding is home from home, especially the younger ones who still share rooms!"

BRABOURNE HOUSEPARENT, MEGAN ROSS

"I'm Miss Ross, I'm the boarding Houseparent for Brabourne House. I run the house, do all of the logistics and look after the boarders. They come back from School, chat to me about their day, and I help if they need anything specific, such as booking taxis or organising a Health Centre visit.

We have girls from all over the world, short term boarders, full time boarders, and flexi boarders joining us for a couple of days. Most of the boarders are here all year round. During the week they focus on their studies, co-curriculars and sports, and in the evenings they have dinner and prep, and do their activities, watch a movie or play a game at the end of the day. Everyone gathers together in the common room, cooking or hanging out as a community.

It's amazing to see how the younger girls quickly adjust, it's not just their independence, but that their English improves for many of them. It's great to see them grow into who they are."





VIVI, MOLDOVA, YEAR 13 - ASPIRING ANIMATOR

"I'm originally from Moldova, a very small country in Eastern Europe. I really want to study the Arts and didn't have a lot of opportunities in that regard, so I decided to move away and experience a new environment, and the UK was the obvious option for me.

I chose Ashford School as my first choice because I feel that no other school appreciates art in the same way, they have our art plastered on the walls. I love walking the corridors and seeing everyone's art. I want to go into 3D game design and animation, so I'm studying Computer Science as well, so this combination allows me to pursue my passion.

I love boarding, I've always been really independent, the combination of living with people but also living by myself in my own room, doing my own things, is a really nice mix for me. A lot of us will have to live by ourselves at university, in student accommodation, so I think it's so important to know how to take care of yourself, doing your laundry, ironing your clothes, cooking your food, cleaning your room."

GOLDMAN, HONG KONG, YEAR 13 - LAW STUDENT

"I'm really happy that I'm here, living and boarding, because I'm from Hong Kong and travelling so far away from home. At first I was nervous, but then in my first year I got a roommate who was very nice, and all in the boarding community are welcoming.

Ashford School is quite British, the meals we get are quite British, but there are also some multi-cultural things, like tastes from other countries. Our boarding community is very multi-cultural, we have boarders from all around the world. I've had an Italian roommate, a British roommate and now in Year 13 I'm living in my own room. You find support and friendship from people all around the world, it's British, but also multi-cultural.

There are a lot of activities in the School and at the weekend, personally I play basketball and we have a club here and a large court. We can do a lot of sports, there's a large astro and I play football a couple of times a week. Amazing!"

SAID, YEAR 13 - FUTURE SOLICITOR

"I would call boarding a second home, it's a home away from home. People come here and meet new friends, they get engaged into the new culture, interact with the people they live with and find future colleagues."

I'm currently in Year 13, studying Maths, Business and Design & Technology, and will be going on to study Law at university and hopefully get qualified as a Solicitor. In our year we have a good range, some people going into medicine and some people going into physics related careers.

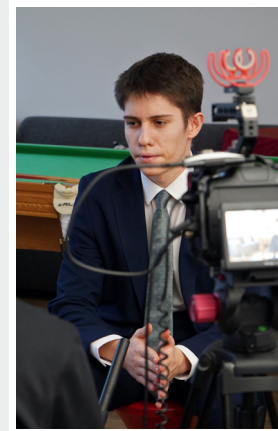
It was great that the Head of Careers helped us, we have Form Tutors who support us along the way, writing Personal Statements, checking applications and giving their experiences of the potential towns we may live in and universities they themselves have graduated from."

YANDEH, GAMBIA, YEAR 13 - PHARMACY DEGREE

"I'm taking A Levels in Chemistry, Maths and Economics. I'm working towards a Pharmacy degree, and the School has been really supportive in helping us achieve our goals and applying to UCAS."

I grew up with four brothers, so living in a house full of girls was different, but it's been very nice having that sisterhood with people I'm living with, and a change from rowdy boys! I have friends in lower years as well and they come to me for advice, I feel like they are my younger sisters. Last year I was able to look up to the Year 13s and that has been helpful to navigate this new setting.

Coming into boarding, I'd never really had many friends from different countries, and it's been interesting to meet people from different backgrounds and cultures. I've made more friends in boarding than I would have as a day pupil. Boarding really helps you to feel at home, even though you aren't at home."



WATCH
OUR VIDEO
ON BOARDING AT
ASHFORD SCHOOL:
ashfordschool.co.uk/boarding

SHORT *Term* BOARDING

Ashford School also offers international students the flexibility of a short term stay, to continue their studies while experiencing life in a leading British boarding school.


Full support is offered to improve English language skills whilst enjoying an immersive visit to the heart of Kent.

Temporary residents will enjoy the same highlights of boarding life as full time pupils, with exciting cultural outings, a wide range of lessons and activities and a high standard of living accommodation.

- Short term stays are offered for a minimum of half a term.
- Short term boarding is available for years 7, 8, 9, 10 and 12.
- Year 11s can attend for one term from September.
- Optional English as an Additional Language Tuition is available.
- Places are limited, please contact admissions@ashfordschool.co.uk



SHORT TERM BOARDERS CAN
MAKE LIFELONG FRIENDS.

A photograph of two young men in school uniforms sitting on a grey couch. The man on the left is wearing a dark blue suit, white shirt, and patterned tie, and is smiling broadly. The man on the right is wearing a dark blue suit, white shirt, and dark tie, and is gesturing with his hands while speaking. A potted plant is visible in the background on the left, and a black and white patterned pillow is on the couch. The background is a plain, light-colored wall.

**“THE SCHOOL PROVIDES A HOMELY
ENVIRONMENT IN WHICH BOARDERS FEEL
SAFE, SECURE AND COMFORTABLE.”**

Independent Schools Inspectorate Report, 2024



A SCHOOL TO FEEL AT *home* IN

Here at Ashford School, we appreciate that starting School and staying in a new country can feel daunting, which is why our boarding provision is designed to be as comfortable and welcoming as possible. Amongst a vibrant community of diverse nationalities, cultures and interests, in friendly boarding houses you'll soon feel at home, even when you aren't.

Ashford School does not have an International Centre - we believe it's important to fully integrate our overseas pupils with our British pupils.



ASHFORD SCHOOL SERVES UP A TASTE OF HOME

MODERN LIVING ACCOMMODATION

- In years 7 to 10, pupils usually share a room and bathroom facilities, with one shower and toilet between 2 rooms.
- In years 11 and 12, students either have a single ensuite room, or 2 roommates share a room, usually with an ensuite bathroom.



ROOM TO LIVE AND GROW

- In Year 13, all boarders have a single ensuite room.
- Where possible, boarders are allocated a roommate from another country, and from the same year group.

FOOD AND NUTRITION

Ashford School boarders are well catered for with a varied and nutritious menu, with opportunities to sample tastes from other cultures. Meals are all inclusive, providing homemade breakfast, lunch and dinner for boarders, with a more relaxed brunch provision at the weekends.

ORAH SAFETY APP

Boarding administration is managed by the Orah platform, hosting signing in/out, leave requests, travel details, events, rewards, sanctions and boarder wellbeing. Parents and guardians have accounts linked to their children for permission purposes, and in order for them to view a boarders' movements. Orah is available in Chinese.



PASTORAL CARE

As in all areas of the School, our boarding provision is underpinned by a strong pastoral support system. Boarders are cared for in a friendly, safe and stimulating environment with an excellent range of opportunities available to them.

RELIGION AND FAITH

We celebrate a rich diversity of cultures, religions, faiths and traditions within the School. Our School Chaplain, Reverend Richard Bellamy, is available to boarders, no matter their background. Within the Health and Wellbeing Centre there is a Quiet Room that is available for religious contemplation, meditation, prayer or simply for quiet reflection.



IMPRESSIVE SCHOOL *Facilities*

THE SOMERVILLE LIBRARY

At the centre of the School campus, the Somerville Library spans three floors, with a designated Sixth Form Study Area, and private reading and study zones for all.

The library boasts over 13,000 fiction and non-fiction titles, and provides access to computers, newspapers, magazines and academic journals, with an online catalogue of nearly 2,000 e-books.

The space is staffed by two librarians from 8am to 6pm.

A STEINWAY SCHOOL

A love of music is embedded into the Ashford School culture, with a well-equipped Music Technology Suite, events hall and the Octagons, two dedicated rehearsal and performance spaces.



GYM FACILITIES ARE POPULAR

Ashford School is one of only 25 schools in the UK with Steinway status, and has recently renewed its commitment to Steinway pianos for a further fifteen years, ensuring that our talented pupil body has access to industry-leading instruments.

A new fleet of pianos was delivered in 2023, including a Model-D concert grand piano used as our recital instrument, B- and AS-models kept within the Octagons, and a Steinway upright is complimented by Essex pianos in our practice rooms.



THE SOMERVILLE LIBRARY IS THE SCHOOL'S HUB

55 ACRES
of land

SPORTING FACILITIES

Ashford School has benefitted from significant investment in sports facilities which include:

- Two indoor swimming pools
- Fitness suite
- Dance studio
- Two sports halls
- Two full size flood lit Astro turf pitches
- Grass pitches totaling 25 acres have been developed in the last year and include 3 grass cricket squares, 1 Astro turf wicket, 5 rugby pitches and two 400m athletics tracks

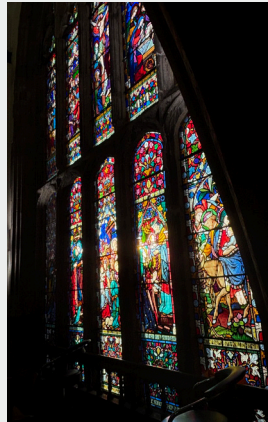
As well as its own grounds, Ashford School makes use of several excellent sporting facilities in and around the Ashford area.



HEALTH AND WELLBEING

Boarders are supported by the Nurses in the Health Centre and the School's Doctor. They are encouraged to use the Health and Wellbeing facilities for medical issues as well as for help, advice and guidance on difficult matters.

The School's Wellbeing Team work in close collaboration with Health Centre Staff and the Boarding Team, to offer a holistic overview. We engage in weekly Mood Mapping to help boarders become more aware of their own mental health and wellbeing.



EXTRA SPECIAL *Extra*-CURRICULAR

When you're a boarder, the fun doesn't end with the School day, with an extensive programme to keep pupils educated and entertained after hours.

Our boarders are kept busy with a wide ranging programme of extra-curricular activities to broaden their educational and cultural horizons.

The schedule is divided between optional activities and mandatory sessions, to foster a continual sense of community and opportunities for bonding.

Through supervised trips and independent travel, boarders are able to access cities and town centres such as London, Canterbury, Maidstone and South East coastal towns.

EVENING AND WEEKEND ACTIVITIES:

- Visits to historical sites, such as Dover Castle and Leeds Castle
- Excursions to London
- Theatre and musical bookings
- Bowling, arcades and escape rooms
- Crafting and art workshops
- Shopping outings
- Crazy golf, go-karting and laser tag
- Library time
- Barbecues
- Cinema showings
- Outings to theme parks
- Wide range of sports, such as tennis, badminton, basketball, football, tennis and swimming
- Use of gym / fitness suites
- Movie, quiz and pizza nights
- Music practice and activities
- Theme nights and meals
- Ice skating

It's not just through boarding that pupils are able to maximise their opportunities for both learning and fun, as Ashford School is renowned for its impressive offering of extra-curricular clubs and teams, with over 80 to choose from.



BOARDERS ARE KEPT BUSY!

BOARDERS AS SCHOOL CITIZENS

Boarders contribute to the School community by regularly organising social occasions, events and competitions.

Residents are encouraged to make their views on how the boarding provision should be run known, with the opportunity to be elected to the House Council. This is a flexible pupil body which includes a House Captain and Deputy, as well as up to five other Senior Prefects, covering the areas of Academic, Wellbeing, Social and Facilities / Environment Secretaries and a Treasurer.

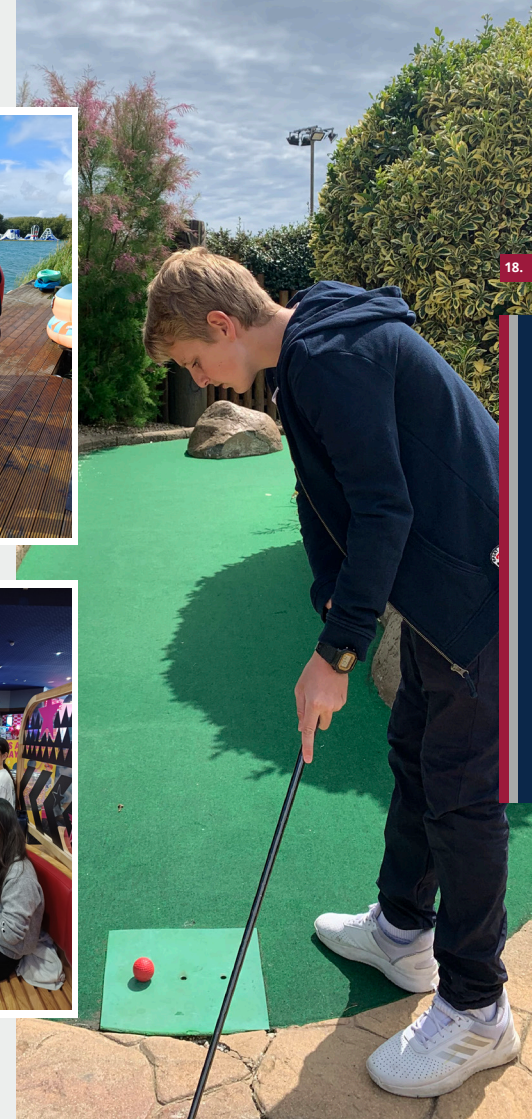
Other leadership opportunities for boarders include Boarding Leader, becoming a House Prefect, joining the boarding committees in the areas of Catering or Social, or acting as a Boarding Induction Representative.

At Ashford School, we aim to prepare our boarders for life. In a supportive and caring environment, we offer boarders opportunities and guidance in order to develop qualities such as compassion, resilience and self-reliance. Developing these life skills enables boarders to become responsible and mature members of society.

OUTDOOR PURSUITS AND LEADERSHIP

All pupils in Year 9 are offered the chance to do the Bronze Duke of Edinburgh Award, which typically results in a significant number of Year 10 students doing their Silver Award. Two gold expeditions run over an 18 month period for pupils in years 11 and 12.

This year we have seen a record 34 students receive their gold award, in a special presentation at Buckingham Palace. This is an outstanding achievement, and moreover this total is the highest ever achieved by any single organisation.



A TOWN *and* COUNTRY EDUCATION

THE BEST OF BOTH WORLDS

Ashford School is a special blend of rural country charm and city centre convenience. Situated in the heart of Kent, known as the Garden of England, the School benefits from large open spaces and 55 acres of land across two sites.

And yet, whilst the School is nestled in a peaceful, private site, it is a short walk from Ashford town centre, where boarders can enjoy bowling, trampolining, an athletics stadium, a cinema, shopping centre and a

nearby theatre. Equally close is Ashford Designer Outlet, with over 100 brands, and a variety of restaurants and cafes.

Ashford is also within commutable distance of the capital city, London. This affords our boarders a wealth of opportunities to explore its huge range of museums, exhibitions and shopping destinations, and to go sightseeing, with some of the UK's most famous tourist attractions within easy reach.

19.



LOCAL TO CANTERBURY AND WHITSTABLE



ASHFORD SCHOOL IN FULL BLOOM



A SCHOOL FOR ALL SEASONS

HISTORY OF ASHFORD SCHOOL

Beginning life in 1898, Ashford School was originally a small school for 'ladies', before twice expanding to new premises by 1903.

By 1910, a new female owner renamed it 'The Modern High School for Girls' and spread to yet again bigger premises, before moving to East Hill in 1913, where the School remains today.

By 1940, Ashford Girls' School was evacuated to the Devon countryside during the war. The School was to be based there for the next 5 years, and in this time flourished, with the School returning to Ashford in 1945.

In 1949, Friars Prep School for boys was established at Great Chart, educating many of the brothers of Ashford girls.

In its centenary year in 1998, Ashford School joined the United Church Schools Trust, (later United Learning), securing the future of the School.

2005 saw Ashford School merge with Friars Prep School, becoming a co-educational School for children from 3 months to 18 years.

The first boys joined Ashford School as day pupils in 2006, and as boarders in 2007.

In 2023, Ashford School celebrated its 125th anniversary.

ASHFORD SCHOOL IS WITHIN EASY DISTANCE OF THE CAPITAL CITY





CONTACT *Ashford* SCHOOL

Whether you're looking to make the full time move to boarding at Ashford School from overseas, or are interested in a short term boarding placement, our dedicated Admissions team are on hand to answer all of your questions about boarding.

For further information, visit our website, find us on social media, or contact us today via any of the following methods:

ADMISSIONS@ASHFORDSCHOOL.CO.UK

WWW.ASHFORDSCHOOL.CO.UK

[INSTAGRAM.COM/ASHFORDSCHOOL](https://www.instagram.com/ASHFORDSCHOOL)

[YOUTUBE.COM/ASHFORDSCHOOLKENT](https://www.youtube.com/ASHFORDSCHOOLKENT)

+44 (0)1233 625171



ASHFORD SCHOOL

Inspiring Minds

GETTING TO ASHFORD SCHOOL

Situated in the town centre, Ashford School's central location is accessible to all major transport links. Ashford is well connected with bus and cycling routes. Ashford School offers its own shuttle bus service, which travels between the Prep and Senior School and to local surrounding villages.

PROXIMITY TO LONDON

As a key Kent town, Ashford is 1 hour and 15 minutes from the capital city by car, and 38 minutes from London St Pancras by train from Ashford International, running every 20 minutes. Trains from Ashford International serve all major London stations.

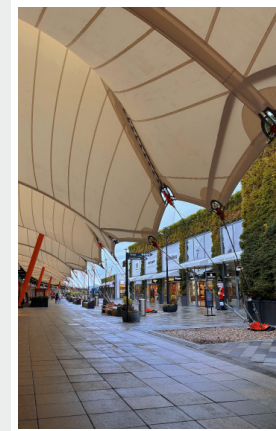
ASHFORD INTERNATIONAL TRAIN STATION

The School is just a seven minute walk from Ashford International train station, a major commuter hub for the South East of England. Routes cover the whole of Kent, London and Ebbsfleet International, with the County Town of Kent, Maidstone being 30 minutes away by rail. Airports are also within easy reach of the station, with Heathrow 80 minutes away by train, and Gatwick only 50 minutes.

AIRPORT TRANSFERS

We make use of the services of ETM Cars to manage our airport transfers from Heathrow, Gatwick, London City Airport and Stansted and Luton Airport. There are specific meeting points for students to meet their drivers when they come into the arrival halls after their flight.

ASHFORD'S DESIGNER SHOPPING OUTLET IS CLOSE BY





WWW.ASHFORDSCHOOL.CO.UK
ADMISSIONS@ASHFORDSCHOOL.CO.UK
INSTAGRAM: @ASHFORDSCHOOL